



eWarehouse is an add-on feature to Elliott's Warehouse Management System. eWarehouse provides greater flexibility by allowing you to use a Windows Mobile Scanner to collect inventory data for Physical Inventory Count, Warehouse Receiving, Multi-Bin operations, Stock Status Inquiry (by item/by bin), Inventory Transfer between Bins and Item Barcode Printing.

This is the perfect solution to effectively operate your warehouses. It is designed to work with the Internet or local Intranet, which makes it an ideal remote warehouse solution. So if you need a sophisticated yet simple and efficient warehouse management system that gives your warehouse personnel more flexibility, then Elliott's eWarehouse is your solution.

eWarehouse is available in two versions:

Basic Version

The Basic version of eWarehouse will allow you to use your Windows Mobile Scanner to handle the following functions:

- **Physical Inventory Count** - Allows you to easily collect data from your warehouse to perform a physical count. Once the data is collected, it will be interfaced with Elliott's Physical Count Processing. Since this method is more efficient than the traditional, your physical count can be done in less time and your warehouse can resume normal operations quickly.
- **PO Receiving** - This function allows you to easily collect data from your warehouse for PO Receiving. The data collected on the mobile device will be interfaced with the Elliott PO receiving function. This will eliminate the need for office personnel to manually enter the PO receiving data, increasing efficiency and accuracy.

Advance Version

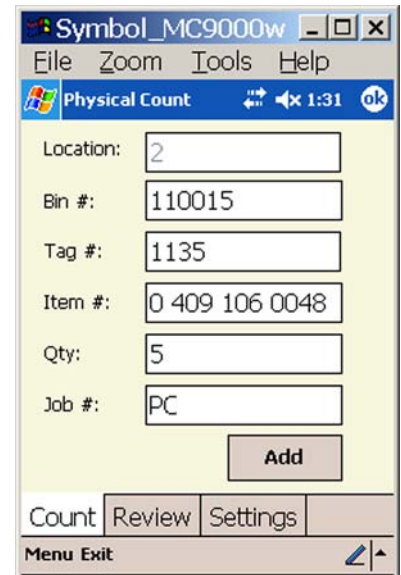
The eWarehouse Advance version will support all operations found in the Basic version. In addition, it will support multi-bin operations, stock status inquiry, inventory transfer between bins, and item barcode printing. You can transfer data to Elliott seamlessly without a manual interface step.

The eWarehouse Advance version is designed to work with Elliott's Multi-bin function. It can operate without Multi-bin, but the value will be reduced.

- **Physical Inventory Count**
- **PO Receiving**
- **Support For Elliott's Multi-Bin** - Elliott's Multi-Bin operation centers around the Inventory Transfer function. The eWarehouse will shift the traditional transfer functions performed by running Elliott from a desktop workstation to the portable scanner. This results in efficient realtime data collection and accuracy. The supported processes include working with shipping (pick ticket), putting away inventory (posting receiving) and production processing.



eWarehouse Login Integrates with Elliott Security



Collect Physical Count Data Right in Front of the Bin



- **Stock Status Inquiry (by item/bin)** - This allows you to view inventory by either entering or scanning the item or bin number. The corresponding item or bin content will be displayed.
- **Inventory Transfer Between Bins** - This is unplanned bin transfer initiated by the warehouse. It can be used to consolidate half full bins together to make space for future receiving.
- **Item Barcode Printing** - You can generate an item barcode label using your Windows Mobile Scanner. This can be used when the item or bin barcode label is damaged. You will need to have the Bartender Barcode Printing software to use this function.

Hardware Requirements

eWarehouse is designed to support the Symbol MC9000 series hand held scanner device. It requires the Windows Mobile Operating System to function.

The eWarehouse Advance Version will require your warehouse to have wireless coverage. It does not have to cover the entire warehouse which may significantly reduce your wireless hardware cost.



*Symbol MC9000
Windows Mobile Scanner*

Software Requirements

eWarehouse will work with Elliott v7.4 or higher. It will require the following software:

- **Elliott Business Software v7.4** - Required for both the Basic and Advance Versions.
- **Elliott's Webservices/Active X** - Required for the Advance Version.
- **Pervasive PSQL Internet/Intranet Connector** - Required for the Advance Version.
- **Multi-Bin (Optional)** - This feature is recommend for the eWarehouse Advance Version.
- **Bartender Barcode Printing Software (Optional)** - Bartender is needed if you wish to print item or bin barcode labels from eWarehouse.

*Faster & More
Efficient Receiving!*

Bin #	Job	Qty OH	Alloc
12083	STOCK	2400	0
15042	STOCK	339	0
15113	STOCK	2100	0
15154	STOCK	2000	0
PROD	STOCK	2	6620

*Integrated with Elliott's
Multi-Bin Function*